

Activo Focus

ONE PoS System

SUPPORT MADE IN ITALY
BUY OUR PRODUCTS

The new **Vertical Activo Focus** speaker is part of the **Activo One System** line; has two main features:

- It works through a common two-pole cable on which both the signal and the power supply flows with **ONE-PoS (Power over Signal)** technology.

- It can control the vertical directivity to address the sound towards the listener.

• **Activo Focus** has all the potential and features of the **Activo One System** line, with the novelty of being able to control the emitted audio beam "**Focus**". By connecting the new **Activo** audio system to the existing cable system we can: adjust the volume, give the delay (delay), direct the acoustic focus towards the listeners.

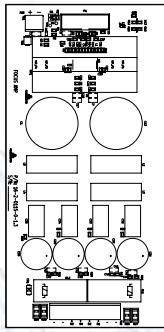
• With **Activo Focus**, Fulgor has developed its own technology with its own algorithm to direct the "**Focus**" on the vertical axis, towards the listener, integrating everything with his own well tested system **Activo One System**, obtaining a system of wide use, very easy to be installed and qualitatively performing.

• The technology used in **Activo Focus** is able to decode the signal and the power sent through a line cable from **ALL-ONE**, which is the power supply of the system. In each speaker you have the possibility to adjust volume, delay and equalization. In addition, the new **Activo**

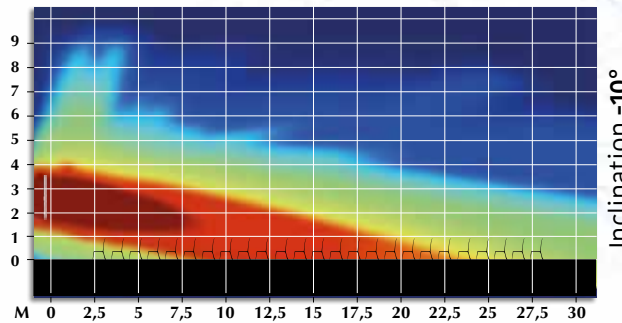
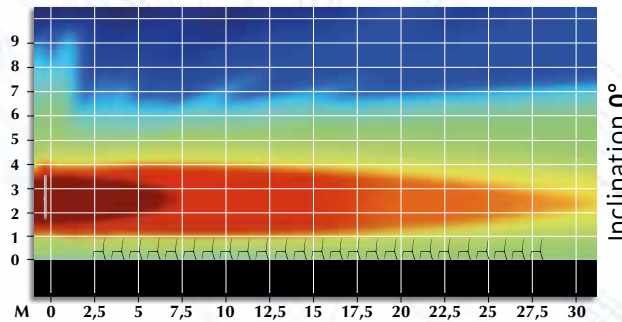
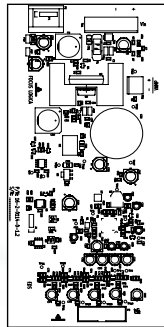
Focus has a more powerful integrated DSP and a 4-channel digital final, which thanks to the specially designed algorithm directs the sound down. The individual loudspeaker groups of the **Activo Focus** speaker are piloted separately from the DSP and the final, the algorithm manages the different groups by changing and combining the main parameters (level, bandwidth, delay), so as to create a homogeneous, controlled and precise beam. The logic board for setting up **Activo Focus** is on the speaker, making it easier the management for the technician using intuitive configuration controller using the cable or WIFI.

• The technician has the possibility to manage the volume and the delay of the single speaker and manage the vertical angle of the focus of the speaker itself from 0° to -10° degrees.

AMP PCB



Logic PCB



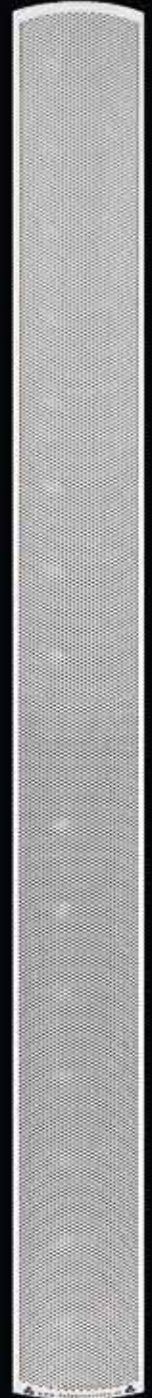
TECHNICAL CHARACTERISTICS

- TECHNOLOGY: _____ DSP and **ONE-PoS**
- DSP: _____ integrated 28/56 bit - fs 48KHz
- FOCUS CONTROL: _____ 250 ÷ 18000 Hz
- DISTANCE OF THE ACOUSTIC BEAM: _____ controlled up to 20/22 meters
- DISTANCE FOR SHORT MESSAGE: _____ intelligibility up to 30 meters
- DISTANCE COSTANT USE: _____ intelligibility 20/22 meters
- POINTING ANGLES: _____ 0° -1° -2° -3° -4° -5° -6° -7° -8° -9° -10°
- INTEGRATED FINALS: _____ 4 in class D
- POWER FOR FINAL: _____ 50 W RMS (100 W on peak) on 8 Ohms
- PROTECTIONS: _____ 1 on the input signal, 1 on polarity inversion, 1 on short circuit
- ANTI-BUMP CIRCUIT: _____ 1 in power on and 1 in power off
- BANDWIDTH PCB: _____ 80 ÷ 18000 Hz
- S/N RATIO: _____ better than 98dB; distortion <0.3%
- COOLING: _____ integral with natural circulation
- INPUT SUPPLY: _____ 43 V DC
- INPUT SIGNAL: _____ ONE enmux
- POWER SUPPLY: _____ **ALL-ONE** dedicated power supply unit with **ONE-PoS** technology
- MAXIMUM CONSUMPTION: _____ 2500 mA
- VOLTAGE REGULATION: _____ local in linear technology
- WEIGHT: _____ Kg 10,50
- DIMENSIONS (HxWxD): _____ mm 1606x100x50



FREE

DSP
DIGITAL SIGNAL PROCESSING
board



FULGOR SERVICE
SISTEMI DI AMPLIFICAZIONE

Numero Verde

800 - 804067

FULGOR SERVICE

Via Caduti del Lavoro, 58 - 19021 Arcola (SP) - Telefono 0187 954488 - Fax 0187 952326
<http://www.fulgor-service.it> - e-mail: info@fulgor-service.it

The images are purely illustrative and the details can be changed without any warning.