



FULGOR SERVICE

PROFESSIONAL AUDIO

Products Catalogue



www.fulgorservice.it



FULGOR SERVICE PROFESSIONAL AUDIO SYSTEM AND TECHNOLOGIES FOR VOICE DIFFUSION

FULGOR SERVICE is an Italian company specialized in the production of professional broadcasting voice and acoustic treatment in reverberant structures; with an expertise gained in over 30 years of leadership in the field of amplification for Sacred buildings, boasting installations on three continents.

FULGOR SERVICE makes available to the customer the experience in the specific area combined with advanced technology acquired over the years, this allows to obtain an harmonious relationship between the voice, the aesthetics of the structure and ease of use of the system, thus meeting any requirement.

Over the years **FULGOR SERVICE** has designed and built numerous products without interrupting the activity of their Studio & Research department; products which has now become indispensable for the professional voice broadcasting in any building or open space; another division of **FULGOR SERVICE** technical staff constantly works in audio system design for Sacred buildings newly constructed and/or being restored, in partnership with professionals, Department of Fine Arts and Architects, to design and produce the best result as possible, respecting the style and the aesthetics of the structure to be sonorized.

FULGOR SERVICE success on the market is also due to its corporate policy: in fact, **FULGOR SERVICE**, thanks to its studio & design department, manufactures and installs its products, analyzing each needs and providing a project-type for single installation, remaining in constant contact with final users. A veritable success, confirmed by more than 15,000 systems realized in Catholic churches and various structures around the world and by the portable systems for processions, born in '88 and evolved very quickly.

FULGOR SERVICE products are designed, tested and manufactured directly in its factory in Arcola (La Spezia), on the basis of market requirements and the constant search for innovative and functional formulas. All **FULGOR SERVICE** brand product range is manufactured with Italian materials and highly skilled labor: this allows you to carry out targeted solutions by making changes even on standard products according to customer's special requirements.

From several years **FULGOR SERVICE** is a licensee of the software suite *EASE* (Enhanced Acoustic Simulator for Engineers) which has become essential for the simulation of electro-acoustic systems. The *EASE* software suite contains a valuable set of tools for studying, modeling and realistic simulation of the acoustic response of a sound system in a given environment, providing a comprehensive full audio analysis of detailed graphics.

Main *EASE* simulation advantages:

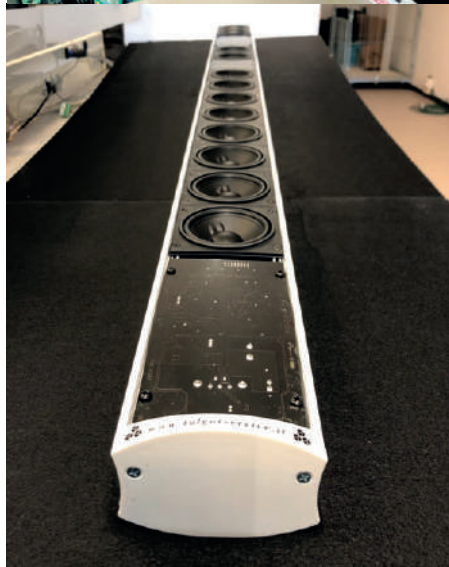
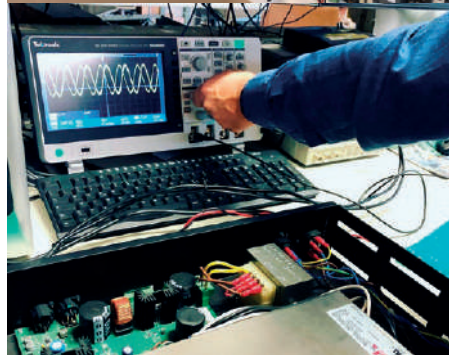
- provide customers with a realistic anticipation of the electro-acoustic behavior of the system;
- use the standard SPL measurement parameters, TSI, etc.
- highlight any problems impossible to evaluate without simulation;
- analyze and solve acoustic problems before they occur.

In the *EASE* software there is a library of the world's largest companies speakers, these can be entered with the program in the structures to understand the effective functioning of the audio system; this library also includes our Vertical, high range Fulgor Service speakers.

FULGOR SERVICE, thanks to its engineering department, analyzes each needs and provides free project-type for the individual installation, detailed and personalized quotes.

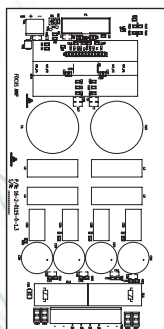
FULGOR SERVICE today boasts a long tradition of professionalism and Italian quality, is installed throughout Italy and distributed by a sales network in various parts of the world, thanks to a network of 48 professional collaborators kept up to date by headquarters.

According to **FULGOR SERVICE** thinking, technology means simplifying a complex action.

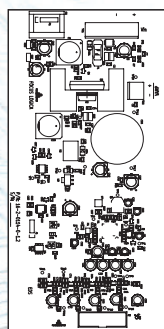




AMP PCB



Logic PCB



The new **Vertical Active Focus** speaker is part of the **Active One System** line; has two main features:

- It works through a common two-pole cable on which both the signal and the power supply flows with **ONE-PoS (Power over Signal)** technology.

- It can control the vertical directivity to address the sound towards the listener.

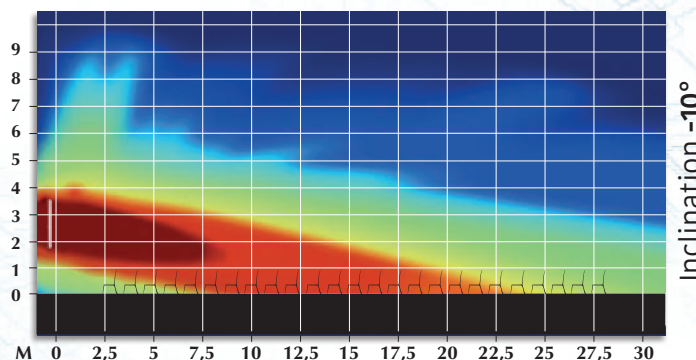
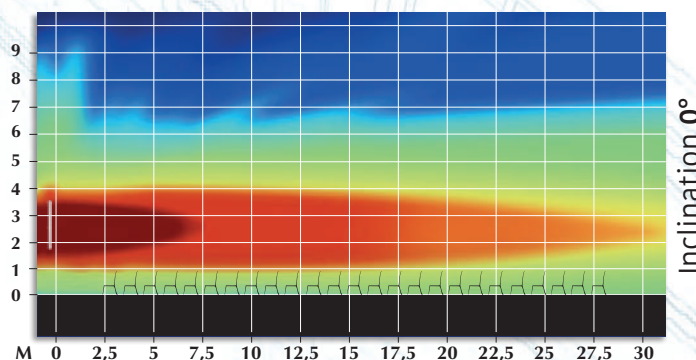
• **Active Focus** has all the potential and features of the **Active One System** line, with the novelty of being able to control the emitted audio beam "**Focus**". By connecting the new **Active** audio system to the existing cable system we can: adjust the volume, give the delay (delay), direct the acoustic focus towards the listeners.

• With **Active Focus**, Fulgor has developed its own technology with its own algorithm to direct the "Focus" on the vertical axis, towards the listener, integrating everything with his own well tested system **Active One System**, obtaining a system of wide use, very easy to be installed and qualitatively performing.

• The technology used in **Active Focus** is able to decode the signal and the power sent through a line cable from **ALL-ONE**, which is the power supply of the system. In each speaker you have the possibility to adjust volume, delay and equalization. In addition, the new **Active Focus** has a more powerful integrated DSP and a 4-channel digital

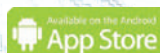
final, which thanks to the specially designed algorithm directs the sound down. The individual loudspeaker groups of the **Active Focus** speaker are piloted separately from the DSP and the final, the algorithm manages the different groups by changing and combining the main parameters (level, bandwidth, delay), so as to create a homogeneous, controlled and precise beam. The logic board for setting up **Active Focus** is on the speaker, making it easier the management for the technician using intuitive configuration controller using the cable or WIFI.

- The technician has the possibility to manage the volume and the delay of the single speaker and manage the vertical angle of the focus of the speaker itself from 0° to -10° degrees.



TECHNICAL CHARACTERISTICS

- TECHNOLOGY: _____ DSP and **ONE-PoS**
- DSP: _____ integrated 28/56 bit - fs 48KHz
- FOCUS CONTROL: _____ 250 ÷ 18000 Hz
- DISTANCE OF THE ACOUSTIC BEAM: _____ controlled up to 20/22 meters
- DISTANCE FOR SHORT MESSAGE: _____ intelligibility up to 30 meters
- DISTANCE COSTANT USE: _____ intelligibility 20/22 meters
- POINTING ANGLES: _____ 0° -1° -2° -3° -4° -5° -6° -7° -8° -9° -10°
- INTEGRATED FINALS: _____ 4 in class D
- POWER FOR FINAL: _____ 50 W RMS (100 W on peak) on 8 Ohms
- PROTECTIONS: _____ 1 on the input signal, 1 on polarity inversion, 1 on short circuit
- ANTI-BUMP CIRCUIT: _____ 1 in power on and 1 in power off
- BANDWIDTH PCB: _____ 80 ÷ 18000 Hz
- S/N RATIO: _____ better than 98dB; distortion <0.3%
- COOLING: _____ integral with natural circulation
- INPUT SUPPLY: _____ 43 V DC
- INPUT SIGNAL: _____ ONE enmux
- POWER SUPPLY: _____ **ALL-ONE** dedicated power supply unit with **ONE-PoS** technology
- MAXIMUM CONSUMPTION: _____ 2500 mA
- VOLTAGE REGULATION: _____ local in linear technology
- WEIGHT: _____ Kg 10,50
- DIMENSIONS (HxWxD): _____ mm 1606x100x50



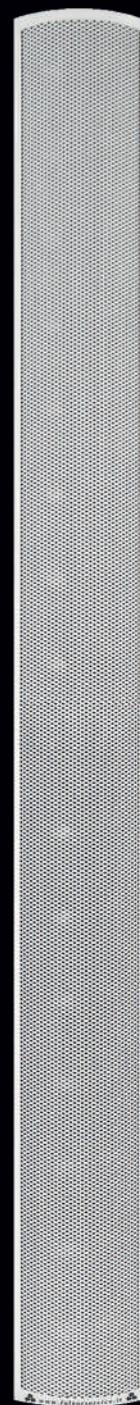
FREE

Active Focus

ONE PoS System

SUPPORT MADE IN ITALY

BUY OUR PRODUCTS



The images are purely illustrative and the details can be changed without any warning.

DSP
DIGITAL SIGNAL PROCESSING
On board

Activo One System



Thanks to the development of new technologies, it was possible to design an innovative audio distribution system, efficient, reliable, simple to install and, above all, highly performant. **Activo One System** presents itself as the only system like this. With **Activo One System** for each playing point you can adjust the power, equalization and delay without necessarily changing the infrastructure. In fact, the **Activo One System** works with a normal cable line on which runs both the audio and power signal.

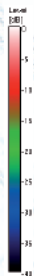
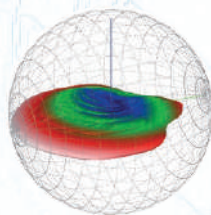
The requirements of modern sound systems and the care of the aesthetic / cultural heritage of Churches lead to design systems with few diffusion points; with a traditional system it is essential to create delay lines between the various audio fronts (phase alignment) and this involves the use of digital matrix, power units with many channels, and especially the preparation of many lines. With **Activo One System** this is no longer necessary since it is enough only one power supply and a minimum number of speakers connected between themselves with a simple bipolar cable (also already existing, as in most cases); each speaker, in fact, will handle with the right pressure-equalization-delay the relevant zone.

Vertical Activo... the best Activo ever!

Vertical Activo is the digital amplified active speaker with **DSP**, the heart of the **Activo One System**, high-performance multipoint systems where high standards of quality and intelligibility are required. **Activo One System** guarantees greater dynamics, pressure and acoustic homogeneity in the structure to be amplified, thereby ensuring greater intelligibility and sound definition.

Vertical Activo, thanks to its array with high efficiency speakers, ensures dynamics, pressure and directivity control both on the horizontal and vertical axis, satisfying even the most demanding designers. **Vertical Activo** is designed and built entirely in **Fulgor Service**, all components are **made in Italy**, this is to have an higher quality product and obtain the best voice performance.

Vertical Activo is produced in three versions: S 4-speakers, L 9-speakers and XL-12 speakers to be used depending on the needed sound coverage in the structure to be amplified.



TECHNICAL CHARACTERISTICS



POWER SUPPLY:

ALL-ONE

ALL-ONE LIGHT

- TECHNOLOGY: _____ ON-PoS
- PROTECTIONS: _____ antipump, inv. polarity, short circuit
- BANDWIDTH: _____ 50 to 18000 Hz
- COOLING: _____ forced by thermostatic fans
- POWER INPUT: _____ 230 V AC
- POWER OUTPUT: _____ 43÷44 V DC
- POWER: _____ 650 W _____ 400 W
- DIMENSIONS (LxDxH): _____ mm 482x300x88 _____ mm 210x260x88
- WEIGHT: _____ Kg 8 _____ Kg 1,8

ACTIVO SPEAKER CHARACTERISTICS

- TECHNOLOGY: _____ DSP and ONE demux
- DSP: _____ on board 24 bit - 48 KHz frequency
- FINAL OUTPUT POWER: _____ 35 W RMS (65 W peak) at 8 Ohm
- PROTECTIONS: _____ on input signal, on reverse polarity on short circuit
- ANTI-BUMP CIRCUIT: _____ at switching on and switching off
- EQUALIZATION: _____ filter settings through a special controller
- BANDWIDTH BOARD: _____ 50 to 18000 Hz
- S/N RATIO: _____ better than 98 dB; distortion <0.3%
- COOL: _____ full natural circulation
- POWER INPUT: _____ 40 to 45 V DC
- SIGNAL INPUT: _____ ONE enmux
- POWER: _____ requires dedicated power supply ALL-ONE
- ACTIVO S WEIGHT: _____ Kg 3,5
- ACTIVO L WEIGHT: _____ Kg 6,9
- ACTIVO XL WEIGHT: _____ Kg 8,5
- ACTIVO S DIMENSIONS (HxWxD): _____ mm 560x100x50
- ACTIVO L DIMENSIONS (HxWxD): _____ mm 1037x100x50
- ACTIVO XL DIMENSIONS (HxWxD): _____ mm 1314x100x50

To perform the calibration of the DSP mounted on the DIGITAL ACTIVO board the specific **CONTROLLER** has to be installed.



The images are purely illustrative and the details can be changed without any warning.



the **Vertical Activo** basic colors are white (RAL 9010) and Volcano (RAL 7006), on demand it can be produced in

various colors using as reference the RAL scale. Included is provided the hardware and mounting brackets that allow discreet and functional installation.

• **Vertical Rae** is the new line high efficiency Array speaker of Fulgor Service.

• **Vertical Rae** comes from the research and development of new high-efficiency speakers; these speakers arranged in array are able to obtain a dynamics and a sound pressure never had until today, by controlling the directivity both horizontally and vertically so as to limit the dispersion of the sound in the structure where they work.

• **Vertical Rae** thanks to new technical and mechanical solutions, is able to satisfy the most complex installations and provides a sound directivity control up to 30 meters, then a voice message reproduction with very high intelligibility and excellent natural timbre.

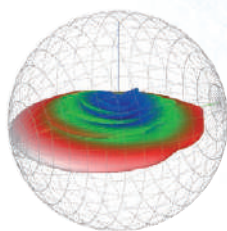
• **Vertical Rae** thanks to the new long and narrow design, it is easy to install in any environment, it can be installed in places of worship, conference rooms, council chambers, or where one needs higher quality sound with exceptional performance for voice.

• **Vertical Rae** is designed and built entirely in Fulgor Service, all components are made in Italy, this is to have an higher quality product and obtain the best voice performance.

• **Vertical Rae** is produced in two versions, 16 and 20 speakers to be used depending on the sound coverage needed in the structure to be amplified, the basic colors are White (RAL 9010) and Volcano (RAL 7006), it can be produced on demand in various colors using as reference the RAL scale.



Hardware and mounting brackets are provided to allow a discreet and functional installation.



TECHNICAL CHARACTERISTICS

VERTICAL 16 RAE

- TRANSDUCERS _____ NUMBER 16
- FREQUENCY RESPONSE _____ 80 Hz ÷ 16.000 Hz
- MAX SPL @ 1 m _____ 120 dB
- DISPERSION HORIZONTAL ANGLE _____ 180°
- DISPERSION VERTICAL ANGLE _____ 13°
- APPLICABLE POWER _____ up to 300 W
- SENSITIVITY 1 W, 1 m _____ 87,6 dB
- IMPEDANCE _____ 8 Ohm
- MOUNTING SYSTEM _____ brackets "L" adjustable axis V axis H
- DIMENSIONS (WxHxD) _____ mm 100 X 1530 X 50
- WEIGHT _____ Kg 10,5

VERTICAL 20 RAE

- TRANSDUCERS _____ NUMBER 20
- FREQUENCY RESPONSE _____ 80 Hz ÷ 16.000 Hz
- MAX SPL @ 1 m _____ 122 dB
- DISPERSION HORIZONTAL ANGLE _____ 180°
- DISPERSION VERTICAL ANGLE _____ 10°
- APPLICABLE POWER _____ up to 300 W
- SENSITIVITY 1 W, 1 m _____ 87,6 dB
- IMPEDANCE _____ 6 Ohm
- MOUNTING SYSTEM _____ brackets "L" adjustable axis V axis H
- DIMENSIONS (WxHxD) _____ mm 100 X 1900 X 50
- WEIGHT _____ Kg 13,7



Vertical 16-20 RAE

High Efficiency
Array Speakers

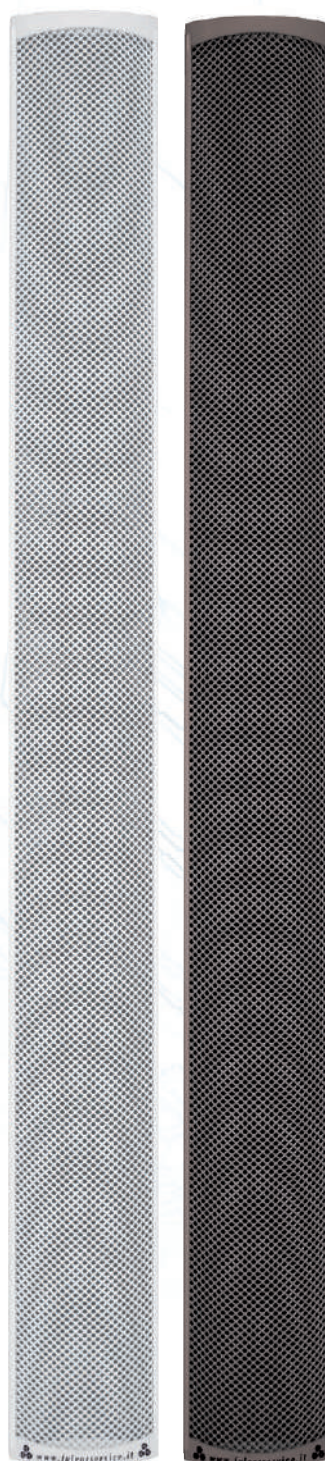
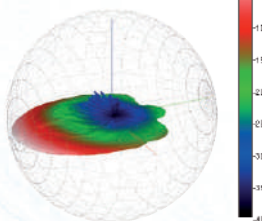


The images are purely illustrative and the details can be changed without any warning.

- **Vertical** is the new speaker of the Fulgor Service line conceived, designed and built to achieve the best speech intelligibility in each structure.
- **Vertical** is an array speaker system that combines aesthetic slim to a sound quality at the highest level.
- **Vertical** is designed and built entirely in Fulgor Service, all components are made in Italy, this is to have a high quality product and best performance in the voice reproduction.
- **Vertical** is produced in various versions, with 2/4/6/8/10 speakers and equipped with autotransformer, to be used according to the sound power required in the structure to be amplified.
- **Vertical** is available in two colors, White (RAL 9010) and Volcano (RAL 7006), on demand it can be produced in various colors using as reference the RAL scale.



Hardware and mounting brackets are provided to allow a discreet and functional installation.



Vertical 2-4 6-8-10

Array speakers



The images are purely illustrative and the details can be changed without any warning.

TECHNICAL CHARACTERISTICS

VERTICAL 2 - 4 - 6 - 8 - 10

- FREQUENCY RESPONSE: _____ 80 Hz ÷ 16.000 Hz
- MAX SPL @ 1 m: _____ 99 dB
- DISPERSION HORIZONTAL ANGLE (RIF. V10): _____ 160°
- DISPERSION VERTICAL ANGLE (RIF. V10): _____ 25°
- APPLICABLE POWER: _____ 30 W on 100V; 100 W at 64 Ohm
- IMPEDANCE: _____ 64 Ohm, 330 Ohm, 660 Ohm, 1 KOhm, 2 KOhm, 3 KOhm
- SENSITIVITY 1 W, 1 m: _____ 89,6 dB
- MOUNTING SYSTEM: _____ "L" brackets adjustable axis V axis H
- DIMENSIONS (WxHxD): mm V2=100x290x50; V4=100x473x50; V6=100x658x50; V8=100x845x50; V10=100x1020x50
- WEIGHT: _____ Kg V2=1,5; V4=2,4; V6=3,5; V8=5,5; V10=5,8

DigiAmp



10X2 Amplified Digital Audio Matrix with 10 Inputs and 2 Outputs and DSP Processor.

Digiamp is an advanced matrix designed to meet all audio applications that require speech intelligibility in every space, especially in reverberant environments. It is engineered to be managed and set up easily and quickly using dedicated software, both for the end-user and for the installer. It offers the flexibility to be controlled either analogically or digitally, depending on preferences.

Digiamp delivers clean and precise sound with exceptional sound pressure thanks to the ability to fine-tune every audio parameter in a dedicated and accurate manner for each work environment. In the proprietary software, we can manage the following for each input: 1 equalizer, phantom power, phase, anti-larsen control, line/mic, gain, dynamic processor, VU meter, level, mute, and potentiometer control. For each output, we can manage: delay, boost, mute, phase, potentiometers, equalizer, dynamic processor, VU meter, and level.

The system allows the creation of up to 16 audio presets via the onboard interface.

Digiamp is a dynamic matrix that can be integrated into any audio system, from the simplest to the most complex. During installation, it must be configured using a PC with dedicated proprietary software capable of generating Pink Noise and Tone for even more precise setup.



TECHNICAL CHARACTERISTICS



SAMPLING FREQUENCY:	48kHz
FREQUENCY RESPONSE:	20Hz to 20kHz, ± 1.5 dB
MAXIMUM DYNAMIC RANGE:	MAXIMUM DYNAMIC RANGE: 101dB
INPUTS:	10 Balanced Micro/Line (Max Gain +60dB) connectors Euro-Block 3-pin (pitch 5.08mm)
OUTPUTS:	2 Balanced Line (Max Level +24dBu) connectors Euro-Block 4-pin (pitch 5.08mm)
AMPLIFIED OUTPUTS:	2x125W RMS at 4 Ω each connectors Euro-Block 4-pin (pitch 5.08mm)
FRONT PANEL INDICATORS:	10 Multifunction Encoders
NUMBER OF ENCODERS:	10
NUMBER OF PRESETS:	16
MAXIMUM NUMBER OF DEVICES WITH RS 485	8 with firmware 1.0.4.2
OPERATING TEMPERATURE RANGE:	0°C ~ 45°C
STORAGE TEMPERATURE RANGE:	-20°C ~ 60°C
POWER SUPPLY:	Phantom 37V (per channel, individually adjustable)
SUPPLY VOLTAGE:	240V 50/60Hz
ELECTRICAL CONSUMPTION:	165W max.
ELECTRICAL CABLE LENGTH:	1.5m
DIMENSIONS:	480 x 88 x 280mm, 2U
WEIGHT:	4.9kg

M6 v3

DSP Digital Audio Matrix

- **M6 v3** is a digital matrix provided with 6 inputs, 4 outputs, 4 antilarsen and DSP with ability to integrate into any new or existing sound system.
- **M6 v3** has 6 input equalizers and 4 output equalizers, gate, delay and automatic opening system for microphones.
- **M6 v3** is a new equipment produced by Fulgor Service that fits into the high range of the audio market, when you need to manage multiple signals and distribute them to multiple outputs processing delays, equalizations, antilarsen, noise gate and presets.
- **M6 v3** is a tool that allows you to get a good speech intelligibility in any environment where it is installed, increasing the efficiency of the audio system and increasing the SPL.
- **M6 v3** is configured at installation time using a PC with proprietary software.
- **M6 v3** is supplied in 1U standard rack and provided with a recall presets panel.
- **M6 v3** is easy to manage for the final customer.

TECHNICAL CHARACTERISTICS

- 6 inputs and 4 outputs balanced XLR mic / line.
- 6X4 matrix by pass
- configurable and remotable potentiometers
- 3 parametric equalizers on each input
- 4 antilarsen assignable outputs on dual technology
- 4 noise gate
- 4 delay
- 6 parametric EQ on every output
- 32 configurable presets
- AutoMixer with advanced logic
- Dedicated software
- Compressor
- Phantom
- Gain up to 50 dB input



RP6 PANEL



ACCESSORIES

- **SUPPLIED:**
RP6 PANEL - PRESET RECALL WITH 6 ITEMS
- **OPTIONAL:**
M-CONTROL INTERFACE TOUCH



GENERAL CHARACTERISTICS

- NUMBER OF BITS: _____ 24
- DYNAMICS: _____ 96 dB
- INPUT LEVEL: _____ -50 dB +50 dB
- IMPEDANCE INPUT: _____ 6K Ohm
- OUTPUT LEVEL: _____ -60 dB + 6 dB
- INPUT LEVEL MAXIMUM: _____ + 50 dB
- OUTPUT IMPEDANCE: _____ 100 Ohm
- FREQUENCY RESPONSE: _____ 20Hz/20000Hz
- OPERATING TEMPERATURE: _____ -5+40° C
- SAMPLING FREQUENCY: _____ 42 KHz
- POWER SUPPLY: _____ 230V ± 10% -50 Hz
- POWER CONSUMPTION: _____ 10 VA
- DIMENSIONS (WxHxD): _____ mm 483X45X200 - 1U standard rack
- WEIGHT: _____ Kg 2,5

SOFTWARE PROGRAMABLE CHARACTERISTICS

- **ANTILARSEN** (2 parameters adjustable with double algorithm):
 - PHASE _____ from 1 to 7,5 ms / from 0,1 to 2 Hz
 - FREQUENCY _____ from 0,1 to 2 Hz
- MATRIX BY PASS: _____ 6 X 4
- NOISE GATE (3 adjustable parameters): _____ threshold, delay, slope
- DELAY ON EVERY CHANNEL: _____ from 0 to 64 m
- PARAMETRIC FILTERS
- 32 PRESET SELECTABLE BY REMOTE CONTROL
- REVERSE PHASE 180° PROGRAMMABLE ON INPUT AND OUTPUT

M12 v3

DSP Digital Audio Matrix

- **M12 v3** is a digital matrix provided with 12 inputs, 8 outputs, 8 antilarsen and DSP with ability to integrate into any new or existing sound system.
- **M12 v3** has 12 input equalizers and 8 output equalizers, automatic opening system for microphones, 8 antilarsen with different algorithm (one for each output), gate and delay.
- **M12 v3** is the evolution of **M6** meant for those who have high demands in audio and want to get maximum performance in speech intelligibility and sound pressure. When it is required to handle multiple signals and send them to multiple outputs processing delays and equalizers, M12 is an indispensable tool.
- **M12 v3** is a tool that allows you to get a good speech intelligibility in any environment where it is installed, increasing the efficiency of the audio system and increasing the SPL.
- **M12 v3** is configured at installation time using a PC with proprietary software.
- **M12 v3** is supplied in 2U standard rack and provided with a recall presets panel.
- **M12 v3** is easy to manage for the final customer.

TECHNICAL CHARACTERISTICS

- 12 inputs and 8 outputs balanced XLR mic / line.
- 12X8 matrix by pass
- configurable and remotable potentiometers
- 3 parametric equalizers on each input
- 8 antilarsen assignable outputs on dual technology
- 8 noise gate
- 8 delay
- 6 parametric EQ on every output
- 32 configurable presets
- AutoMixer with advanced logic
- Dedicated software
- Compressor
- Phantom
- Gain up to 50 dB input



RP6 PANEL



ACCESSORIES



GENERAL CHARACTERISTICS

- NUMBER OF BITS: _____ 24
- DYNAMICS: _____ 96 dB
- INPUT LEVEL: _____ -50 dB +50 dB
- IMPEDANCE INPUT: _____ 6K Ohm
- OUTPUT LEVEL: _____ -60 dB + 6 dB
- INPUT LEVEL MAXIMUM: _____ + 50 dB
- OUTPUT IMPEDANCE: _____ 100 Ohm
- FREQUENCY RESPONSE: _____ 20HZ/20000Hz
- OPERATING TEMPERATURE: _____ -5+40° C
- SAMPLING FREQUENCY: _____ 42 KHz
- POWER SUPPLY: _____ 230V ± 10% -50 Hz
- POWER CONSUMPTION: _____ 10 VA
- DIMENSIONS (WxHxD): _____ mm 483X90X200 - 2U standard rack
- WEIGHT: _____ Kg 4

SOFTWARE PROGRAMABLE CHARACTERISTICS

- **ANTILARSEN** (2 parameters adjustable with double algorithm):
 - PHASE _____ from 1 to 7,5 ms / from 0,1 to 2 Hz
 - FREQUENCY _____ from 0,1 to 2 Hz
- **MATRIX BY PASS:** _____ 6 X 4
- **NOISE GATE** (3 adjustable parameters): _____ threshold, delay, slope
- **DELAY ON EVERY CHANNEL:** _____ from 0 to 64 m
- **PARAMETRIC FILTERS**
- **32 PRESET SELECTABLE BY REMOTE CONTROL**
- **REVERSE PHASE 180° PROGRAMMABLE ON INPUT AND OUTPUT**

• SUPPLIED:

RP6 PANEL - PRESET RECALL WITH 6 ITEMS

• OPTIONAL:

M-CONTROL INTERFACE TOUCH



AMP 60

Amplifier - Mixer



AMP 60 is a professional amplifier with 8 inputs and 2 outputs.

AMP 60 has a robust final in class A/B which produces the power of 60W RMS at 4Ohm and allows it to be used in any audio system, from the simplest to the most complex.

AMP 60 has the ability to handle the bass and treble on each microphone input and a low-cut filter.

AMP 60 is supplied without amplifier too, as pure mixer and it is named MX 71, it has the same characteristics as AMP 60 without amplifying.

AMP 60 and **MX 71** are supplied in 1U standard rack 19" and their weight is Kg 2 (MX 71) and Kg 4 (AMP 60). 220V power supply with IEC connector.

AMP 60 and **MX 71** have the quality to make the sound clean and intelligible.



TECHNICAL CHARACTERISTICS

AMP 60

- OUTPUT POWER: (AMP60 only) _____ 68 W, 4 Ohm
- FREQUENCY RESPONSE: _____ 40 Hz - 20 KHz
- HARMONIC DISTORSION: _____ THD < 0,1% a +20 dB output Master
- SENS. MICROPHONE INPUTS: _____ -60 dB
- SENS. AUX INPUTS - 1 BALANCED: _____ -56 dB
- SENS. AUX INPUTS - 2 RCA: _____ -20 dB - 20 KOhm
- BASS CONTROL: _____ on all channels at 100 Hz ± 14 dB - F.T. ± 3 dB 500 Hz
- TREBLE CONTROL: _____ on all channels at 10 KHz ± 14 dB - F.T. ± 3 dB 1,7 KHz
- LOW CUT FILTER: _____ -3 dB @ 700 Hz
- OUTPUT REC OUT: _____ 0 dB - 6 KOhm
- BALANCED OUTPUT SIGNAL: _____ +20 dB max (unbalanced without signal loss)
- MIC INPUT: _____ n° 6 jack XLR phantom selectable
- FEEDBACK PROCESSOR CONNECTION: _____ 1 stereo jack IN/OUT
- AUX 1 INPUT: _____ 1 balanced XLR
- AUX 2 INPUT: _____ 2 RCA
- REC OUT: _____ 2 RCA
- LINE OUT: _____ 1 balanced XLR
- LOUDSPEAKERS OUTPUT: _____ 1 two-way terminal
- VOLUME ADJUSTMENTS : _____ 8 (one per input)
- MASTER VOLUME: _____ 1
- VU METER: _____ 4 led (-40, -20, 0, +10 dB)
- LED INDICATOR: _____ 1 protection (red) / operating (green)
- POWER SUPPLY: _____ 220/230 V ca /max power 110 VA (AMP60) - Fuse 3.15 VA
- DIMENSIONS (WxHxD): _____ mm 483 x 45 x 305
- WEIGHT: _____ 4 Kg
- PHANTOM POWER ACTIVATED BY DIPSWITCH
- LOW-CUT FILTER ACTIVATED BY DIPSWITCH

AMP 8150

Amplifier - Mixer with feedback control

SUPPORT MADE IN ITALY
BUY OUR PRODUCTS

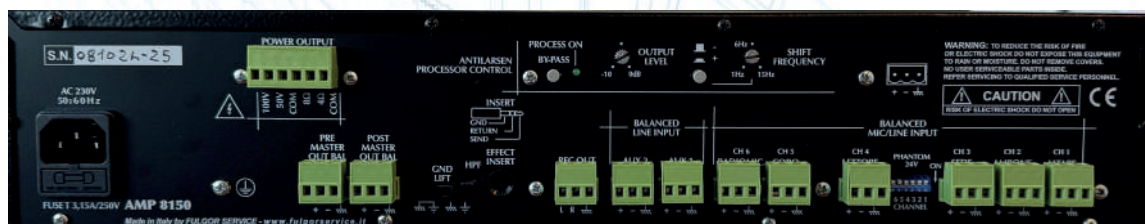
AMP8150 is a 150W RMS powered mixer that delivers clear and intelligible audio in any environment. It is robust and reliable, featuring 8 inputs: 6 microphone and 2 balanced line inputs. It is the evolution of the AMP series amplifiers, as it integrates an anti-larsen system with the ability to exclude and adjust frequency and output level, a 3-band equalizer for each input to adjust the sound and achieve optimal results in any space, microphone gain control for each input, noise gate, and visual LED indicators for output signal and noise gate opening/closing. It also includes a high-pass filter.

Amplified 4/8 Ohm or 50/100V, 2 balanced low-impedance outputs.

Microphones can be individually powered with PHANTOM 24V via a mechanical switch.

Connectors: Rear inputs/outputs with Euroblock connectors.

Power Button illuminated.



TECHNICAL CHARACTERISTICS

AMP 8150

• OUTPUT POWER:	150 W, 4 Ohm
• LOUDSPEAKERS OUTPUT:	4Ω 8Ω 50V 100V
• FREQUENCY RESPONSE:	40 Hz – 20.000 Hz
• HARMONIC DISTORTION:	THD < 0,1% a +20 dB output Master
• SENS. MICROPHONE INPUTS:	-60 dB with Gain
• SENS. AUX INPUTS - 2 BALANCED:	-20 dB with Gain
• 8 INPUT EQ.:	3 Controls, bass, meddle, treble
• HPF:	-3 dB @ 550 Hz
• OUTPUT REC OUT:	Balanced
• BALANCED OUTPUT:	Pre end Post Mater with Euroblock
• MIC INPUT:	n° 6 Euroblock phantom selectable
• AUX 1 and 2 INPUT:	2 Line balanced with Euroblock
• UNBALANCED IN/OUT EFFECT:	1 with Jack 6,3 stereo
• FEEDBACK PROCESSOR:	1 On Board, shift freq. 1Hz to 15Hz
• NOISE GATE OUT:	1 with threshold
• VOLUME ADJUSTMENTS :	8 (one per input) 1 Master
• VU METER:	4 led (-15, -7, 0, +3 dB)
• LED INDICATOR GATE:	1 Close (red) / Open (green)
• POWER SUPPLY:	230 Vac with fuse 3,15A
• DIMENSIONS (WxHxD):	483 88 x 280mm
• WEIGHT:	Kg 8
• PHANTOM POWER ACTIVATED BY DIPSWITCH	
• LOW-CUT FILTER ACTIVATED BY JUMPER	



MDF 82

Power Strip

- **MDF 82** is a power strip 220V with 8 IEC filtered by RF and VDR filters to suppress impulsive disturbances from the mains. The management system of the power supplies is of fundamental importance when you have to turn on multiple devices at same time.
- **MDF 82** is manufactured according 19" standard rack and is equipped with an integrate anti-pump circuit to eliminate the annoying "PUMP" switching on and off of some amplification system.



- **MDF 82** is recommended for its ease of use and its absolute security. In case of doubts on the power supply system it is necessary to use it, otherwise failures in the system itself may occur.
- **MDF 82** brilliantly solves every need of the power management.



TECHNICAL CHARACTERISTICS

- DESCRIPTION: _____ 220 V strip
- ANTI-PUMP CIRCUIT: _____ insertable
- PROTECTION: _____ RF - VDR
- VAC MAIN: _____ 230 V - 50 Hz
- VAC OUT: _____ 230 V - 50 Hz
- AC OUTPUTS: _____ 8 x 230 V
- APPEARANCE: _____ 1U standard rack
- DIMENSIONS (WxHxD): _____ mm 483 x 45 x 310
- WEIGHT: _____ Kg 3,5



UP 1x120

Amplifier

Power amplifier 1x120 W RMS for professional audio, with output transformer 8 Ohm 4 Ohm, 50/100V.

XLR input and Euroblock output connections.

UP series is designed for a wide variety of applications: churches, multi-functional meeting rooms, auditoriums, open spaces and various places of worship.

This amplifier provides ample power for loudspeaker systems for sound reinforcement distributed with a high number of fixed impedance or high impedance speakers.

THD performance (signal-noise ratio) with 0.1% ratio at 100dB. All Fulgor Service power units and amplifiers have professional performance while keeping THD as low as possible to achieve outstanding quality that has always distinguished them.

UP 1X120 power amp requires no internal fans for cooling. The latter is carried out by a heat sink that ensures excellent heat exchange in a silent and reliable way.

UP 1x120 has electronic circuitry with quality and safety features.

The metal carpentry is suitable for flat support and is designed for 19" rack mounting (1 rack unit).



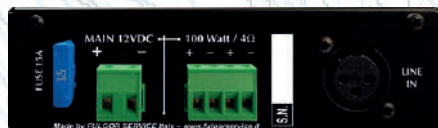
TECHNICAL CHARACTERISTICS

UP 1 X 120

- DESCRIPTION: _____ 1 channel amplifier
- RATED MAXIMUM POWER: _____ 1 x 120 W
- PEAK POWER: _____ 1 x 180 W
- VOLUME CONTROL: _____ frontal potentiometers
- COOLING: _____ air cooling by dissipator
- LINE IN: _____ balanced XLR
- OUTPUT TRANSFORMER: _____ Ohm / Volt
- PASSBAND: _____ 20-22.000 Hz \pm 2 dB
- DIMENSIONS (WxHxD): _____ mm 483 x 44 x 275
- WEIGHT: _____ Kg 6

DPA 1

Digital Amplifier



DPA 1 is an amplifier designed for specific applications in matter of sound, wherever quality, robustness, reliability and small dimensions are required.

DPA 1 includes 1x100W into 4 Ohms class D power unit. Class D technology guarantees a high standard of robustness and silence.

DPA 1 has a fanless air cooling system to ensure maximum silence during operation, has also an electronic circuitry with quality and safety features, offers S/N ratio and THD/N of professional level.

DPA 1 occupies 1/3 of the space of a rack unit, in fact you can place up to 3 DPA1 side by side in the space of a rack unit.

DPA 1 can be powered either at 230 V AC via its supplied external power supply, or with a 12 V DC external aftermarket with a minimum amperage of 8Ah.

DPA 1 has in the front a convenient on/off switch and volume potentiometer, in the rear there is an euroblock connector fuse, for power supply and amplified outputs, and an XRL for balanced line input.

DPA 1 comes with all the metal carpentry to be installed in 19" racks with one, two or three **DPA 1**.



An external line transformer **TR150** is optionally provided, with which you can adapt the impedance to 4Ohm, 8Ohm, 16Ohm and 50V, 70V, 100V.

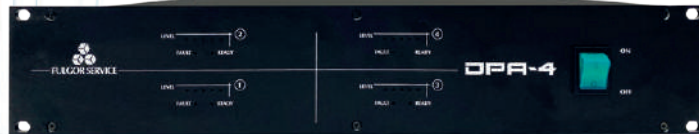
TECHNICAL CHARACTERISTICS

DPA 1

- DESCRIPTION: _____ Class D digital power unit
- RATED MAXIMUM POWER: _____ 100 W RMS su 4 Ohm
- PASSBAND: _____ 20-22.000 Hz \pm 2 dB
- INPUT: _____ 1 balanced XLR
- POTENTIOMETER: _____ 1 on front
- MECHANICAL ARRANGEMENTS: _____ 1, 2 or 3 DPA 1 in a 19" rack
- DIMENSIONS (WxHxD): _____ mm 137 x 41 x 195
- WEIGHT: _____ Kg 1,5

DPA 4

Digital Amplifier



DPA 4 is a multichannel amplifier designed for specific applications in matter of sound, wherever quality, robustness and reliability are required.

DPA 4 includes 4x100W class D power units, completely separated from each other.

Ideal for multi-zone audio systems.

The four power units of the **DPA 4** can work individually or bridged, with the following configurations;

4 x 150W – 1 x 300W e 2 x 150W – 2 x 300W

DPA 4 has a fanless air cooling system to ensure maximum silence during operation.

DPA 4 is designed for the connection of an external potentiometer for each input with which you can adjust the volume of each channel.

DPA 4 has 4 outputs on 4Ohm line. Optionally, an external line transformer, TR150 is provided (one for each required channel) with which you can adapt the impedance to 4Ohm, 8Ohm, 16Ohm and 50V, 70V, 100V.

DPA 4 has an electronic circuitry with quality and safety features. The metal carpentry is suitable for flat support and it is designed for 19" rack mounting (2 rack units).

TECHNICAL CHARACTERISTICS

DPA 4

- DESCRIPTION: _____ Class D multichannel digital power unit
- POSSIBLE CONFIGURATIONS: _____ 4 x 150 W RMS channels into 4 Ohm
_____ 1 x 300 W RMS channel into 8 Ohm and 2 x 150 W RMS channels into 4 Ohm
_____ 2 x 300 W RMS channels into 8 Ohm
- PEAK POWER: _____ double than their respective RMS
- PASSBAND: _____ 20-22.000 Hz \pm 2 dB
- INPUTS: _____ balanced
- GAIN: _____ pre-gain from 0 dB to +12 dB
- POTENTIOMETER: _____ remotables
- DIMENSIONS (WxHxD): _____ mm 483 x 90 x 290
- WEIGHT: _____ Kg 4



TR 150

- INPUT: _____ 4Ohm
- OUTPUT (Ohm): _____ 4, 8, 16
- OUTPUT (Volt): _____ 50, 70, 100
- RATED MAXIMUM POWER: _____ 180 Watt RMS

TR150



Coach

Portable Amplifier



COACH is a portable amplifier, very lightweight (only Kg 1.5), with rechargeable batteries (6 hours duration), professional UHF wireless microphone PLL 16-channel, USB port with display and keyboard management tracks, control tone, alarm, wired dynamic microphone. Pull-out handle and strap transport. This product is very flexible, given the minimum size can be used both indoors and outdoors.



TECHNICAL CHARACTERISTICS

- OUTPUT POWER: _____ 40W/25W (RMS) 4 Ohm load
- SPEAKER: _____ 4"
- T.H.D.: _____ < 0,5%
- AUDIO INPUT: _____ Mic, AUX, USB 2.0
- AUDIO OUTPUT: _____ AUX
- POWER SUPPLY: _____ 20V DC 2,5A
- RECHARGEABLE BATTERY: _____ 14,8B / 2,7Ah (Lithium)

- DURATION: _____ about 5-6 hours (music), 10-12 hours (speech)
- CHARGING TIME: _____ about 4 hours
- DIMENSIONI (WxHxD): _____ mm 156x156x205
- WEIGHT: _____ Kg 1,6
- FREQUENCY RESPONSE: _____ 50Hz - 20KHz \pm 3 dB
- ANTENNA: _____ built in

SUPPORT MADE IN ITALY
BUY OUR PRODUCTS

FB 5000

Antilarsen with Noise Gate



• **FB 5000** is a professional processor that eliminates "Larsen effect" preventing your sound and voice system "whistles" and enhancing in the meantime the power and ensuring the cleanliness and intelligibility of the voice.

• **FB 5000** is designed and manufactured for the use in all environments, in particularly in those acoustically difficult, of any size.

• **FB 5000** is a professional device essential in any installation and can be adapted to most of the systems, new or existing.

• **FB 5000** is an antilarsen processor with frequency shift, its installation is recommended in any voice amplification system.

• **FB 5000** is specifically designed for the elimination of the electroacoustic reaction between speakers and microphones.

• **FB 5000** also incorporates a noise gate to suppress background noise during breaks of the signal, this can be inserted when you want to drastically reduce the background noise of the microphones during breaks. The intervention threshold is adjustable.



• **FB 5000** has an automatic exchange system between unbalanced and balanced IN-OUT to connect with professional amplification systems (XLR).

• **FB 5000** has an automatic exchange system between unbalanced and balanced IN-OUT to connect with professional amplification systems (XLR).

TECHNICAL CHARACTERISTICS

- INPUT LEVEL: _____ 0 dB μ (+10 dB μ max)
- INPUT IMPEDANCE: _____ 100 Kohm
- OUTPUT LEVEL: _____ 0 dB (+ 10 dB μ max)
- OUTPUT IMPEDANCE: _____ 220 Ohm
- SHIFTING FREQUENCY: _____ 1 - 10 Hz
- SHIFTING: _____ increasingly or decreasingly
- NOISE GATE: _____ adjustable threshold with rapid intervention and soft start

- FREQUENCY RESPONSE: _____ 30 Hz / 20 Hz -1 dB
- DISTORTION: _____ < 0,1%
- BACKGROUND NOISE: _____ (w/o NG) -90 dBA rif. 0 dB@ 1 KHz
- VAC MAIN: _____ 230 V - 50 Hz IEC M
- POWER CONSUMPTION: _____ 5 VA
- DIMENSIONS (WxHxD): _____ mm 483 x 45 x 310
- WEIGHT: _____ Kg 3,5

- **ECO** is the system for procession by **FULGOR SERVICE**.
- **ECO** is a portable device, lightweight and easy to use with rechargeable batteries, can be transported anywhere thanks to its low weight and the possibility to separate the electronics from the battery pack thus reducing the size.

- **ECO** is an essential tool to spread voice or music outdoors or where we do not want wires, thanks to the rechargeable lithium polymer batteries we can have a life of 6 hours, one or two professional microphones 100 channels PLL (m 100 flow rate in open field), a USB input with controls, an AUX input (3.5mm jack), an internal antilarsen to more easily handle the volume, battery

charge indicators and indicators of the wireless microphone channel.

- **ECO** covers an area up to 300 meters thanks to the powerful amplifier and high performing horns that can rotate at 360° and spread the sound evenly with excellent quality, making it understandable to all participants the message transmitted.
- **ECO** is supplied with transmitter (professional wireless microphone to handle), 2 horns, a rod holder, a battery pack, a carrying belt, a battery charger and user manual.
- **ECO/P** is the radio link system to cover long distances, when it needs to combine two or more **ECO**, with radio link we have the possibility of multiply indefinitely **ECO** receivers, in fact **ECO/P** using its antenna with radio module, emits a UHF signal which cover a radius of about 1.5 KM in open field.
- **OPTIONAL:** Double radio microphone - additional battery pack - specific speakers for indoor - carrying bag.

TECHNICAL CHARACTERISTICS

RADIO LINK (ECO/P only)

- **POWER:** _____ according to user's requirements
- **ANTENNA:** _____ 5/8 rubber
- **AVERAGE ABSORPTION:** _____ 650 mA
- **POWER SUPPLY:** _____ 12 V DC stabilized

AMPLIFIER/PRE

- **MIC IN SENSITIVITY:** _____ 2,5 mV
- **AUX IN SENSITIVITY:** _____ 150 mV
- **POWER SUPPLY:** _____ 16 V DC
- **POWER:** _____ 25 W - 4 Ohm with constant supply 16 V DC

RECEIVER

- **FREQUENCY:** _____ UHF 100 ch
- **RECEIVER MODULE:** _____ sub tone squelch
- **SPURIOUS SUPPRESSION:** _____ >80 dB
- **ABSORPTION:** _____ ~ 100 mA
- **POWER SUPPLY:** _____ 10-15 V DC

HORN SPEAKER TUI5

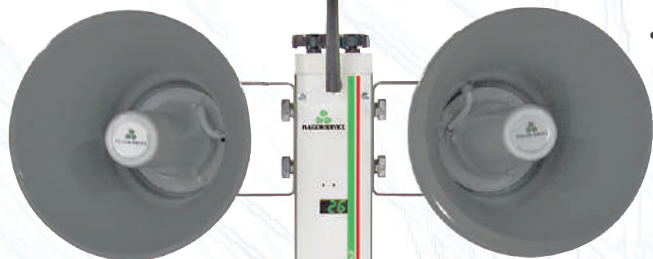
- **TEXTURE:** _____ aluminium
- **MAXIMUM POWER:** _____ 15 W
- **IMPEDANCE:** _____ 8 Ohm

RECHARGEABLE BATTERIES

	ECO	ECO/P
• BATTERY PACK :	single	double
• TYPE:	4Ah - 16,8V DC	8Ah - 16,8V DC
• AUTONOMY:	about 6 hours	about 6 hours
• CHARACTERISTICS:	lithium	lithium

DIMENSIONS

- **TOTAL LENGHT** in mm: ECO: 1390 - ECO/P: 1650
- **WEIGHT:** Kg 4,1 Kg 5,8

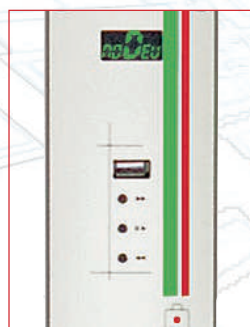


P100



FS470

L100



USB connection

Connection with articulated joint between the device and battery pack



Voice Amplification Professional System
Long-range Radio Link
ECO/P





R100 R200

Wireless Microphone System



R100



R200



R100+R200 RACK



FS470



FS630



L100



P100

Fulgor Service uses an high performing wireless microphone system with advanced technology, which is part of the professional range. Both transmitters and receivers use multifrequency UHF PLL digital technology and provide 100 channels usable for solve problems of interferences in any place. This wireless microphone system is built in Fulgor Service with special technical devices that can cover very important distances (100 meters in open field), with no signal loss. The models vary from single receiver to double receiver. Both models are provided with autoscan button to automatically search for free channels in the environment where they have to be installed and the antennas can be mounted both on front and rear side.

All receiver modules can be combined with handheld or lavalier (body-pack) transmitter, headset, foulard or with the thinnest flesh-colored microphones.

TECHNICAL CHARACTERISTICS

R100 RECEIVER

- RECEIVER: _____ single
- CHASSIS: _____ EIA standard 19" 1/2 unit
- RECEIVING MODE: _____ Diversity
- FREQUENCY RANGE: _____ UHF 680~760MHz
- ANTENNA: _____ 2 - back or front panel. Removable
- PRESET: _____ 100 preset channels
- OSC TYPE: _____ PLL synthesized
- SENSITIVITY: _____ 10dBµV, S/N>80 dB
- S/N RATIO: _____ >106dB(A)
- THD: _____ <0.5% @ 1KHz
- FREQUENCY RESPONSE: _____ 50Hz~18KHz with high pass filter
- SQUELCH: _____ "PiloTone & NoiseLock" dual-squelch circuit
- MAXIMUM LEVEL OUTPUT: _____ switch 2 levels: Line e Mic
- POWER: _____ AC external adapter, 12~15V DC, 1A
- DIMENSIONS (WxDxH): _____ mm 210 x 45 x 200
- WEIGHT: _____ Kg 1

R200 RECEIVER

- RECEIVER: _____ double
- CHASSIS: _____ EIA standard 19" 1/2 unit
- RECEIVING MODE: _____ Diversity
- FREQUENCY RANGE: _____ UHF 680~760MHz
- ANTENNA: _____ 2 - back or front panel. Removable
- PRESET: _____ 100 preset channels
- OSC TYPE: _____ PLL synthesized
- SENSITIVITY: _____ 10dBµV, S/N>80 dB
- S/N RATIO: _____ >106 dB(A)
- THD: _____ <0.5% @ 1KHz
- FREQUENCY RESPONSE: _____ 50Hz~18KHz with high pass filter
- SQUELCH: _____ "PiloTone & NoiseLock" dual-squelch circuit
- MAXIMUM LEVEL OUTPUT: _____ switch 2 levels: Line e Mic
- POWER: _____ AC external adapter, 12~15V DC, 1A
- DIMENSIONS (WxDxH): _____ mm 210 x 45 x 200
- WEIGHT: _____ Kg 1,1

MICROPHONES: "LAVALIER" L100 / "HANDHELD" P100

- FREQUENCY RANGE: _____ UHF 680~760MHz
- BANDWIDTH: _____ 24 MHz
- AF POWER OUTPUT: _____ L100: 50mW - P100: 30mW
- ISSUE SPURIE.: _____ < -55dBc
- TYPE DISPLAY: _____ LCD
- OSC TYPE: _____ PLL synthesized
- MAX. INPUT LEVEL: _____ L100: 0dBV - P100: 140dB SPL
- TYPE OF BATTERIES: _____ AA x 2 alkaline
- COATING: _____ Plastic wrinkled
- L100 DIMENSIONS (WxHxD): _____ mm 63 x 82 x 22
- L100 WEIGHT: _____ about 81gr excluding batteries
- P100 DIMENSIONS: _____ Ø 50mm - Lenght 233mm
- P100 WEIGHT: _____ about 246gr excluding batteries

Microphones

Professional, Dynamic, Gooseneck, Slick

FS 450 / FS 450S / FS 450SW

- Professional goosneck microphones, double joint. Condenser capsule, cardioid, high sensitivity.

They are designed for high quality general amplification, professional recordings and radio broadcasts, places of worship, multi-functional and multimedia rooms, make the voice clear and intelligible.

The assembly is provided for installation on table, on lectern, on rod; the microphones work with phantom power from 12 to 52V; they are all anti-glare and are supplied with a special anti-bump shock.

The **FS 450S** models have a switch with reference LED on the microphone body.

The **FS 450SW** model has all the features of the previous models but it is in white color.

The total length of the microphone is 450 cm. Fully engineered by Fulgor Service.



FS 935

- Goosneck miniaturized microphone, hypercardioid condenser capsule, precise, it makes the voice clear and intelligible. Professional microphone which has the option to change the microphone capsule and decrease the length from 31 cm to 19 cm. FS 935 is suitable to be installed on altars or pulpits and finds an excellent employment also to capture groups or choirs of people, in fact, thanks to the longer microphone capsule it gets to receive over 2 meters.

- CAPSULE: _____ unidirectional hypercardioid condenser
- FREQUENCY: _____ 30 Hz - 20.000 Hz
- SENSITIVITY: _____ -35 dB \pm 3 dB
- IMPEDANCE: _____ 250 Ohm \pm 30%
- PHANTOM: _____ 11 V - 52 V DC
- TOTAL LENGTH: _____ mm 310 in standard version



FS 630

- Headset microphone for internal use **FS 630**

is a multifunctional product, for all those who need high quality of voice's sound and hands free. The skin colour appearance makes it barely visible. Its unidirectional condenser capsule produces a better quality of voice and sound isolation for effective feedback control, minimizes environmental noises and those resulting from handling a microphone, deletes all background noises.

- CAPSULE: _____ cardioid condenser
- FREQUENCY: _____ 200 Hz - 18.000 Hz
- SENSITIVITY: _____ -70 dB \pm 3 dB
- IMPEDANCE: _____ 1500 Ohm \pm 30%
- CAPSULE DIAMETER: _____ mm 5



FS 933

- High sensitivity table microphone in white colour, long shot hyper-cardioid capsule, makes the voice clear and intelligible. Designed for reinforcement of high quality sound in an ultra-compact design. The low-profile element of the microphone offers one narrow MicroLine® polar pattern with angle of acceptance of 90°. Suitable for all types of table or Altar, thanks to its minimalist shape it is easy to install in any environment. White colour, white cord.



- CAPSULE: _____ HYPER-CARDIOD
- FREQUENCY: _____ 30HZ - 20.000HZ
- SENSITIVITY: _____ -35DB \pm 3DB
- IMPEDANCE: _____ 250OHM
- PHANTOM: _____ 11V - 52V DC
- TOTAL LENGTH: _____ mm 92

FS 933ML

- White microphone for overhead voice capture, featuring a long-range hypercardioid capsule that ensures clear and intelligible sound thanks to its technology. Ideal for suspension over choirs, instrumental groups, and

theater stages. Its ultra-compact, low-profile design is perfect for situations where the voice or singing needs to be captured from above the people.

- CAPSULE: _____ hyper-cardioid
- FREQUENCY: _____ 30-20.000Hz, 250 Ω
- PHANTOM: _____ da 11-52V DC
- DIMENSIONS: _____ 147mm length
- WEIGHT: _____ 100gr
- COLOR: _____ white
- CABLE LENGTH _____ 15 mt

FS 300

- Shotgun microphone. **FS 300** is a microphone designed to amplify choruses, thanks to its polarized condenser capsule, manages to capture the voice from considerable distances, made of aluminum, is provided with stand support and XLR connector with ON/OFF switch.

- CAPSULE: _____ gradient condenser
- FREQUENCY: _____ 30 Hz - 20.000 Hz
- SENSITIVITY: _____ -36 dB \pm 3 dB
- IMPEDANCE: _____ 200 Ohm
- PHANTOM: _____ 11 V - 52 V DC
- TOTAL LENGTH: _____ mm 330



BW 100



- Metal base microphone stand, designed to provide stability for goosneck microphones

- DIMENSIONS: _____ 105mm
- WEIGHT: _____ 445gr
- COLOR: _____ white/black
- CABLE LENGTH _____ 4 mt



FS 51

- _____ cardioid condenser
- FREQUENCY: _____ 30 Hz - 20.000 Hz
- SENSITIVITY: _____ -34 dB
- IMPEDANCE: _____ 200 Ohm

FS 470

- Foulard microphone **FS 470** is a multifunctional, dynamic and contemporary-designed product. Its smooth, ergonomically designed and flexible goosneck has been projected to suit different persons and it wraps easily around the neck and can be worn with the mic head either on the left or right position. Thanks to its cardioid capsule it gets excellent acoustic characteristics; its compact design is perfect to use audio system outside, for procession, shows, entertainment and so on, for all who require vocal and sound high quality in a hands-free application.



- CAPSULE: _____ cardioid
- FREQUENCY: _____ 100 Hz - 18.000 Hz
- SENSITIVITY: _____ -84 dB \pm 3 dB
- IMPEDANCE: _____ 600 Ohm \pm 30% (@ 1 KHz)
- LENGTH: _____ mm 530

MD 100

- **MD 100** is a traditional handheld microphone, dynamic, cardioid, black coloured. It's a sturdy product, with a very high acoustic performance and the voice is faithfully reproduced: perfect for soloist and/or spokesmen. **MD 100** is equipped with built-in ON/OFF switch. It's packaged in a box containing a microphone extension with XLRM/XLRF 8 m long and an holder to install it on a stand and/or a base.



- CAPSULE: _____ cardioid
- FREQUENCY: _____ 50 Hz - 15.000 Hz
- SENSITIVITY: _____ -72 dB \pm 3 dB
- IMPEDANCE: _____ 600 Ohm
- TOTAL LENGTH: _____ mm 52,8 X 177



SPK360

Outdoor Speaker

Outdoor speaker, dispersion 360°, 400W 4Ohm, small in size, suitable to reproduce the sound of bells, warnings and announcements, thanks to his good sound quality. It comes complete with brackets for both wall and ground mounting. Diameter cm 43, depth without pole cm 15, weight Kg 14.

R30T

Compact Horn-Loaded Speaker

R30T is an horn-loaded speaker made of special Polypropylene, resistant to water and UV rays, full range.

Designed for quality sound reinforcement at medium and long distances for both voice or music for outdoor or large environments, such as industrial halls, streets, stadiums, military environments, etc. etc.

R30T is equipped with steel front protection, the bracket is included in the package; both bracket and diffuser are gray, weight Kg 11.

- Frequency response 80Hz-18kHz ± 3 dB; • Drivers 1x8"/2" voice coil LF - 1x1"/1.4" voice coil HF; • Input voltage 100V or 8 Ω ; • Power 37.5W/75W/150W @ 100V - 200W @ 8 Ω ; • Sensitivity 96dB 1W/1m; • Max SPL 117dB continuous - 123dB peak; • Impedance 8 Ω nominal; • Dispersion (-6dB) 100°x100°; • Crossover 2.5kHz passive; • Dimensions mm 300x320x334 (WxHxD); Weight Kg 11; • Colore Grey.



DVS4 / DVS8

2 way box speaker

DVS4 is a compact multi application speaker for indoor or outdoor, Waterproof IP46, UV resistant.

- 4" woofer with a 0.8" (20mm) dome tweeter.
- Power 40W RMS and 160 Peak 16 Ω .
- Response 75-20Khz.
- Sensitivity 88dB 1V at 1m
- SPL max 103dB continuous.
- Dispersion 120°/90°.
- Transformer 100V connection possibility 10W/20W/40W/OFF/16 Ω .
- euroblock input clamps.
- Matching ABS bracket, possibility of orientation of the speaker at 75° in all directions.
- Reinforced ABS construction.
- Color: White.
- Dimensions mm 224x140x160 • Weight Kg 5.

DVS8 is a compact multi application indoor or outdoor diffuser, Waterproof IP46, UV resistant.

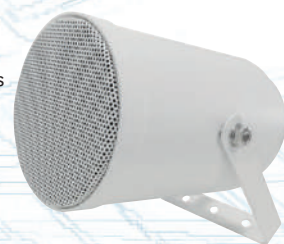
- 8" woofer with a 1" (mm 25)/1" voice coil HF tweeter.
- Power 150W RMS and 600 Peak 16 Ω .
- Response 60-18Khz.
- Sensitivity 94dB 1V at 1m
- SPL Max. 116dB continuous.
- Dispersion 90°/50°.
- Transformer 100V connection possibility 37.5W/75W/150W/OFF/16 Ω .
- euroblock input clamps.
- Painted steel C-shaped bracket.
- Reinforced ABS construction.
- White color.
- Dimensions mm 445x240x270 • Weight Kg 10.5.

PS 312

Sound projector

PS 312 is an ABS UVproof sound projector water resistant with IP56 protection.

- Dual cone coated woofer 5.5" - 8 ohms ;
- Power 16W @ 100V with 3 selectable possibilities (16-10-5W, Impedance 0,625-1-2Kohms);
- Dispersion 160°;
- Response 100-18KHz, SPL 1w1m. 95-max107dB;
- Dimensions Diam.mm138, Depth mm 200;
- Cable lenght cm 40, stainless steel bracket included; Weight Kg 1,35; Color Light Gray.



Sub-A/P

Active/passive subwoofer designed to reproduce low-frequency 'SUB' sounds, constructed with a compact wooden enclosure capable of generating a substantial amount of low-end frequencies.

- Power 350W RMS • Woofer 12"
- Input/Output: XLR bilanciati R/L.
- Dimensions: 607x525x475mm

MH 6300

Loaded Horn Speaker

MH 6300 is a 2-way horn-loaded speaker in ABS, gray color, water resistant (IP 66), RMS 60W, 100V or 8 Ohm. Complete support bracket.

Dimensions (WxHxD): mm 370 x 270 x 305.



TU108

High Efficiency Horn Speaker

The horn speaker high efficiency **TU 108** has been designed for professional use, even heavy and demanding. Thanks to its powerful driver and its structure, it has a sound acoustic pressure of 129dB; the very small total size allows an easy installation.

Body in ABS, driver in ferrite, steel bracket, IP 66: all this makes TU 108 suitable for installation on civil vehicles, industrial vehicles and rescue/emergency vehicles, both terrestrial and marine.

TU 108 is suitable for sonorizing large environments, also very noisy; it can be used to launch "safety messages", as multitone siren or to boost voice signals.

- Power 100W @ 8 Ω ;
- Dimensions (WxHxD) mm 205X154X133



DS 178T

2 Way Ceiling Speaker

DS 178T is a ceiling speaker with a 100 Volt transformer. You can select different power levels or 8 Ω connection through the proper switch.

Suitable for voice and music, designed specifically for false ceilings, it is invisible but always provides a linear response.

It finds good use in installations in small-medium conference rooms, small-medium multimedia rooms, cruise ships, classrooms, swimming pools, industrial areas and amusement parks.

- Power 32W @ 8 Ω ;
- Dimensions (\varnothing xD) mm 203X109



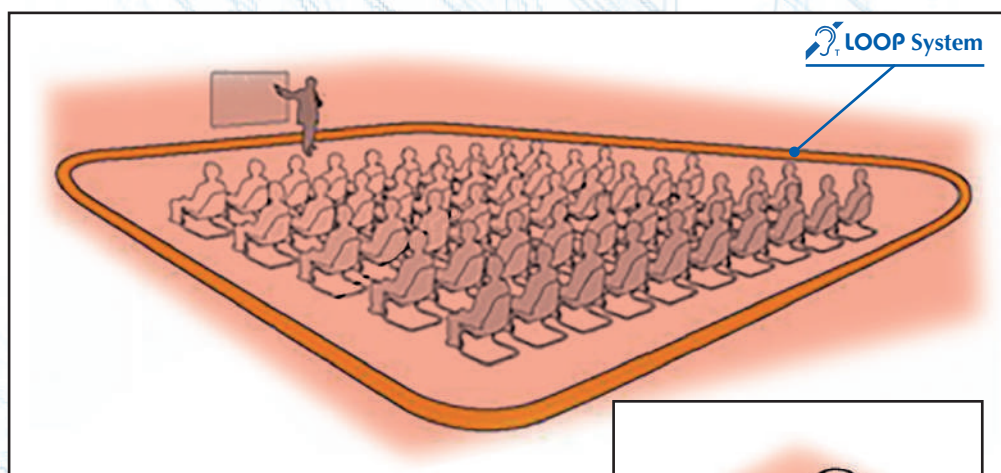
LOOP

Magnetic induction system

by **univox**

Among the numerous sectors in which PA system is applied, Fulgor Service has specialized in "LOOP", a magnetic induction system that makes communication accessible to people with hearing loss and hearing aid wearers. The inductive LOOP allows the automatic connection of the hearing aid with an audio system, allowing, in the enabled area, a perfect listening to those who are talking. The installable systems are many, from the simplest ones, to be installed at home, to the most complicated and professional for very large areas, in the open field too. With the development of these technologies, we are currently coming to extend the use of this system also in demarcated areas: taxis, post offices, office desks, etc. Fulgor Service boasts many years of experience in designing, manufacturing and installation of these systems and currently works in synergy with one of the largest companies worldwide operating in the production of these

devices, thus being able to offer appropriate solutions for each customer's request, satisfying their needs. You can contact us at the numbers you find on this brochure. One of our sales staff will be pleased to visit you at your place to offer you a solution.



Museums



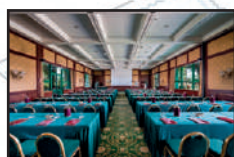
Cinema



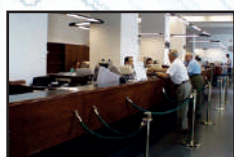
Offices



Reception



Hotels



Banks



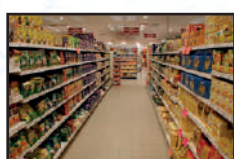
Hospitals



Taxi



Universities



Supermarkets



Churches



Boats



Schools



Info Points



Multipurpose Rooms



Tour-Guides



Texts approved by the Parliament
- Edition 03/09/2003
Rights and dignity of the people
with disabilities A5-0270/2003

European Parliament resolution about Communication from the Commission "Towards a United Nations instrument legally binding for the promotion and protection of rights and the dignity of people with disability" - COM (2003) 16 -2003/2100 (INI)

Excerpt Article 19
(...) asks the **UN Member States** to ensure that in the future convention will be specified at least the following disability rights:
h) access to culture and recreational activities:
- right to accessibility of television, broadcasting and Internet (including the audio description, interpretation in the gestural language and subtitling of the programs, where appropriate);
(...)

PROJECT and SOLUTIONS

some of our references

Santa Caterina - Basilica della Natività - Betlemme



Chiesa della Trasfigurazione - Monte Tabor - Galilea



Santuario del Gethsemani - Gerusalemme - Israele



Basilica di San Vitale - Ravenna



Cattedrale Santa Maria Assunta - Lodi



Cattedrale di San Lorenzo - Genova



Cattedrale di San Francesco - Livorno



Basilica Ursiana - Cattedrale di Ravenna



Basilica Vaticana di Santa Maria in Trastevere - Roma



Cattedrale di San Lorenzo - Grosseto



Chiesa di S. Andrea della Valle - Roma



Santuario Santa Maria del Fonte - Caravaggio - (BG)



"Cristo Re" Cattedrale della Spezia - (SP)



Cattedrale di San Cerbone - Massa Marittima - (GR)



Cattedrale di San Zeno - Pistoia



Cattedrale di San Venanzio - Fabriano - (AN)



Santuario dell'Amore Misericordioso - Collevalella - Todi



Cattedrale di Santo Stefano - Prato



S. Maria del Mar - Barcellona - Spagna



Cattedrale di Grasse - Francia



Chiesa di Santa Maria del Carmine - Pavia



Cattedrale dell'Assunta - Savona



Santuario Santa Rita - Milano



Cattedrale di Ragusa



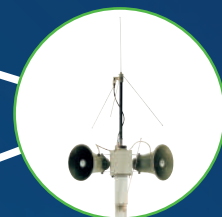
1987



1989
APP
1° Amplifier for
Processions



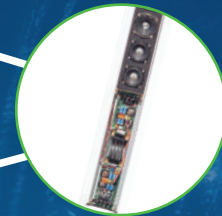
1993
APP/P Radio Link



1995
ACTIVO series
Series Array
Speakers



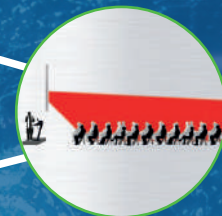
1998
BIACTIVO W.D.S.
System series



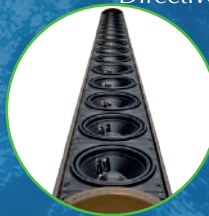
2001
Automixer
84 DSP



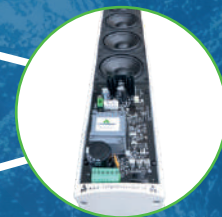
2006
DIRECTIVITY High Efficiency
Directiveness DSP System



2010
VERTICAL
High Efficiency
Speakers



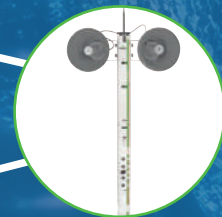
2011
ACTIVO becomes
ACTIVO ONE SYSTEM
DSP



2013
M6/M12
Multifunctions
DSP Matrix



2015
APP becomes
ECO Amplifier
for processions



2018
ACTIVO FOCUS
ONE PoS System



2019
WIFI Control



2021
Web Radio
and Web TV



2024
DIGIAMP



2025
Focus VR816

